

Project type:  
3-bedroom  
walk-up apartment  
—  
Floor area:  
1,766sqft

## IN HONOUR OF HERITAGE

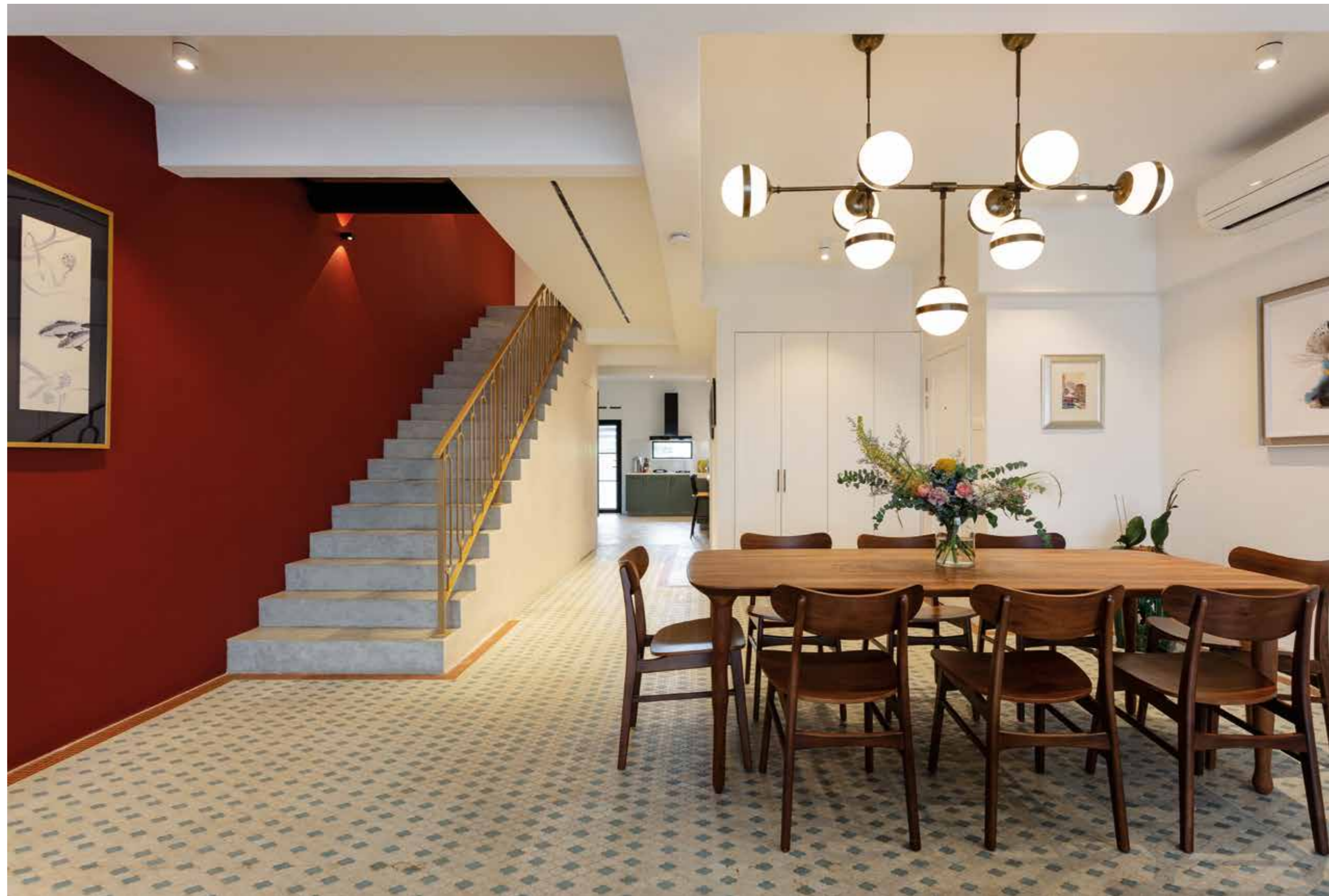
By conserving original features of the duplex apartment and amalgamating them with modern elements, D' Initial Concept have conceived a charming and inimitable abode for a couple.

TEXT VANITHA PAVAPATHI



### Old meets new

The mosaic floor tiles, original to the apartment, impart a nostalgic vibe to the living space and make a bold canvas onto which minimalist wood furniture rest on. D' Initial Concept further heightened the interplay of heritage and modernity in the dining space with abstract art, Shaker style built-ins and a dramatic Vistosi Peggy pendant light.







### Dream kitchen

The kitchen has been opened up and now enjoys a through view into the living space, with the only space separator being the flooring. Cement screed was chosen for its modern industrial aesthetic that goes well with the moss green kitchen cabinetry. It is certainly an unlikely colour choice but one that works for a modern vintage look. Here, the design team also took full advantage of the large windows that overlook the neighbourhood by building a breakfast nook cum informal dining space.



### Fiery facet

Another standout feature of this dwelling is the crimson wall that runs from the living area to the stairway. The bold wall not only helps accentuate the mosaic flooring, but also the gold painted balustrade that draws inspiration from the vintage pattern of the '60s. It is without a doubt the loudest feature in this apartment that truly enlivens the interior without the need for additional decor.



### Luxe effect

(Far right) The common bathroom is a picture of elegance and tranquillity. For seamless continuity, the walls and floors are clad in homogeneous tiles. A custom-built marble washstand lends a sophisticated, hotel luxe vibe while the round mirror and oval washbasin break up the angularity of the space. The use of ribbed glass window helps diffuse light into the bathroom while maintaining privacy.



### THE BRIEF

The couple living in this capacious duplex apartment desired an open, light-filled abode that fuses modern functions while respecting its heritage. Almost all non-structural walls have been removed in the living space, creating a through view all the way from the front to the rear of the apartment. However, extra precaution was taken not to damage the original mosaic floors that helped guide the design direction.

The improved spatial layout is further enhanced with architectural details. In the living room, bi-fold doors replaced windows for unobstructed views of Suntec City and Marina Bay Sands. Meanwhile, '60s inspired pattern take prominence on the stairway. Everywhere else, architectural lighting features set the tone of each space and bring together the varied design elements for a cohesive interior.



### D' Initial Concept

1 Tampines North Drive 1  
T-Space #01-30  
Singapore 528559  
T (65) 6348 8982  
F (65) 6610 2396

pea@dinitialconcept.com  
www.dinitialconcept.com