

Project type:  
4-bedroom executive  
condominium  
apartment  
—  
Floor area: 1,163sqft

# A MODERN LUXE TREATMENT

A four-bedroom executive condominium apartment is transformed into a hotel-like space in the hands of D' Initial Concept.

TEXT ROSSARA JAMIL



## Living it up

The brief comprises a modern luxe interior with plenty of storage. "They also wanted the home to look cosy but not too dark," says designer Ashley Loh of D' Initial Concept. With that, Ashley proposed a palette of wood, grey and metallic accents. The living area is one prime example, with textured grey tiles and mirror panels for the television feature wall. Here, she gave attention to lines, meticulously produced via the feature wall and the slim floating console.



## Decorative element

The living area flows into the dining area, merging by way of the dark woodgrain laminated feature that hides storage and frames the customised display unit in light woodgrain. Hidden lights bring depth and showcase the items on display. The dining area exhibits the look and feel of a chic upscale restaurant. A white dining table takes up minimal visual space and serves to balance the dark finishes in the area.



## Take a seat

Over at the main entrance, Ashley proposed to conceal any functional elements like the distribution board within a shoe cabinet by the entrance. All the residents' shoes can be stored to keep clutter to a minimum. Instead of a full wall storage unit, the designer left room for a settee. With the alcove, the compact space opens up visually. The woodgrain patterns here match the main door and complement those seen in the living area for a cohesive aesthetic.





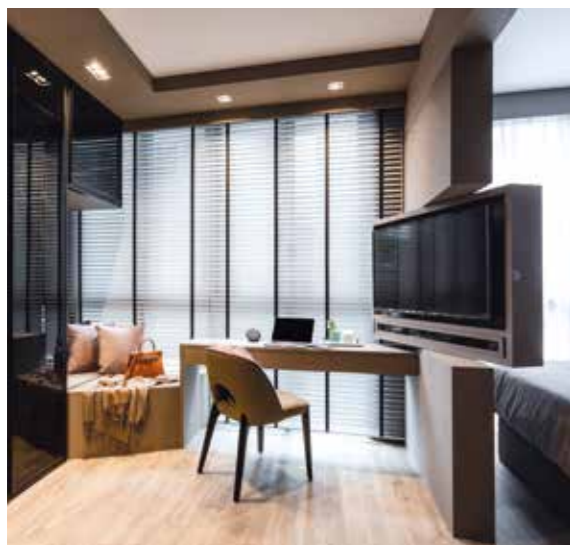
*A modern luxe interior with plenty of built-in storage was conceptualised for this family of three, who calls this executive condominium apartment home.*

#### THE BRIEF

At 1,163 sqft and with four bedrooms, this home offers all the space that this family of three wishes for. It allows the family to combine two bedrooms to form a master suite and incorporate storage space into the living area. Designer Ashley Loh of D' Initial Concept fulfilled these ideas for the couple. She further conceptualised a palette that satisfies their preference for a cosy home.

The couple also specified that they wanted to avoid a dark interior. So, Ashley carefully put together a palette of light and dark, brightening things up with metallic accents and incorporating mirror and glass in various spaces. These include the living area and the master bedroom.

As a result, the apartment exudes warmth, yet gives off an airy vibe. Ashley then mixed things up with streamlined furniture and elegant lighting for an uncluttered feel.



#### Work and rest

The original master bedroom was then converted into a study and wardrobe area. This is a practical arrangement that places the wardrobe close to the bathroom. Also, with the wall taken down, Ashley had a partition erected to house the television. A swivel allows the homeowners to turn the television to the study. One of them could enjoy late night movies without disrupting the other's sleep. In addition to the desk, a seat in a corner becomes a place for reading or watching television in comfort.



#### It takes two

This being a family of three, there are extra bedrooms for the family to explore design ideas. The couple opted to combine the master bedroom with an adjacent bedroom to create a master suite. The smaller bedroom becomes a cosy bed area furnished with a button-tufted bedframe and textured walls in dark and light grey. The aim was to create a sense of symmetry with matching bedside lights and gold bedside tables.



**D' Initial Concept**  
366A Tanjong Katong Road  
Singapore 437124  
T (65) 6348 8982  
F (65) 6610 2396

pea@dinitialconcept.com  
www.dinitialconcept.com