

A CONTEMPORARY MULTI-GEN HOME WITH A RUSTIC EDGE

Project type:
3Gen BTO HDB flat
—
Floor area:
1,290sqft

A visual splendour of dark, dramatic textures takes over this family home for five. The D'Initial Concept designers worked out a contemporary design scheme with dusky wood details to highlight a cosy and welcoming living space. To boost the home's functionality, they packed in tons of storage and other hidden features that maximise space without forsaking style.

TEXT DISA TAN



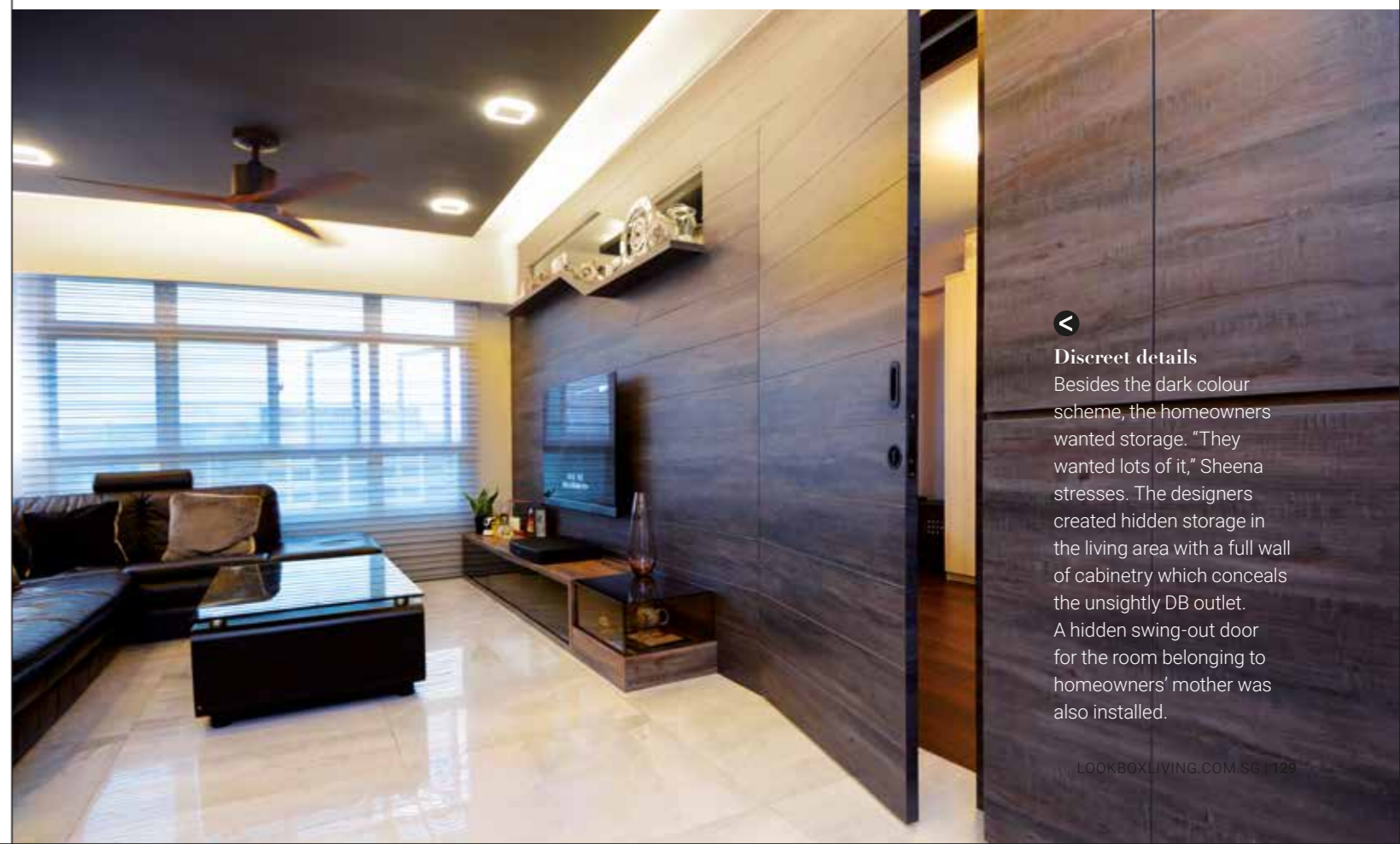
Dark dominance

The homeowners had a preference for darker shades. Creative Director Pea Chong and designer Sheena Sim factored that in with dark woodgrain laminate coverings for the walls and a dark grey ceiling feature in the living room. To balance these strong tones, they applied high sheen finishes like glass, tinted mirrors and glossy homogeneous tile flooring to brighten the space.



Fine dining

A monochromatic theme of greys and whites is used for the false ceiling feature and wall. The darker shade draws out a sophisticated aesthetic while the lighter grey creates a warm and cosy backdrop to frame the dining area.



Discreet details

Besides the dark colour scheme, the homeowners wanted storage. "They wanted lots of it," Sheena stresses. The designers created hidden storage in the living area with a full wall of cabinetry which conceals the unsightly DB outlet. A hidden swing-out door for the room belonging to homeowners' mother was also installed.



Light interplay

The dark colour palette is repeated in the kitchen. This is reflected on the quartz countertops, cabinets and coloured glass backsplash. Too much of the same dark tones can prove too overwhelming and to lighten the visual load, the designers created two open dish drying racks with light woodgrain-toned backings. The walls of the existing service yard were hacked away as well to open up the space.



Peek-a-boo features

One of the three common bedrooms has been turned into a multi-purpose space and is fitted out generously with storage. The raised platform features flip-up panels to access the hidden storage at the base. Pea and Sheena then designed a study tabletop which is seamlessly integrated within the full-height cabinetry. Without any obstruction that a regular study table would otherwise impose, this leaves the floor area free as a playroom for the little one.



Private retreat

An overlay of wall tiles with a metallic sheen transforms the master bathroom into a place of relaxation, and beautiful woodgrain accents on the vanity's cabinetry completes the look. The box-up, which conceals the water pipes, has also been embellished with decorative acrylic panels of textured patterns for a matching aesthetic.



THE BRIEF

With one child and an elderly parent in the picture, the married couple living here understood that storage was a necessary requirement for their 3Gen HDB BTO flat. Hidden storage was proposed by Pea Chong and Sheena Sim of D' Initial Concept as it would result in less visual clutter.

The owners have a preference for darker colours and this is prominent within the colour palettes for most of the communal zones. The designers balanced the look with light-enhancing measures like glossy materials and brighter streaks of colour for contrast.

Besides hidden storage, features like a concealed door and a built-in study worktop add to the seamless flow of the contemporary design scheme.



D' Initial Concept

366A Tanjong Katong Road
Singapore 437124
T (65) 6348 8982
F (65) 6610 2396

pea@dinitialconcept.com
www.dinitialconcept.com