

# A practical take on the English Colonial style

Marrying form and function beautifully in this 3-bedroom apartment, the D' Initial designers wanted to replicate the beauty and sophistication of the colonial English style. Intricate details and bold design elements come together to result in an immaculate dwelling for the family of four.

TEXT DISA TAN

## Project Type

3-bedroom condominium

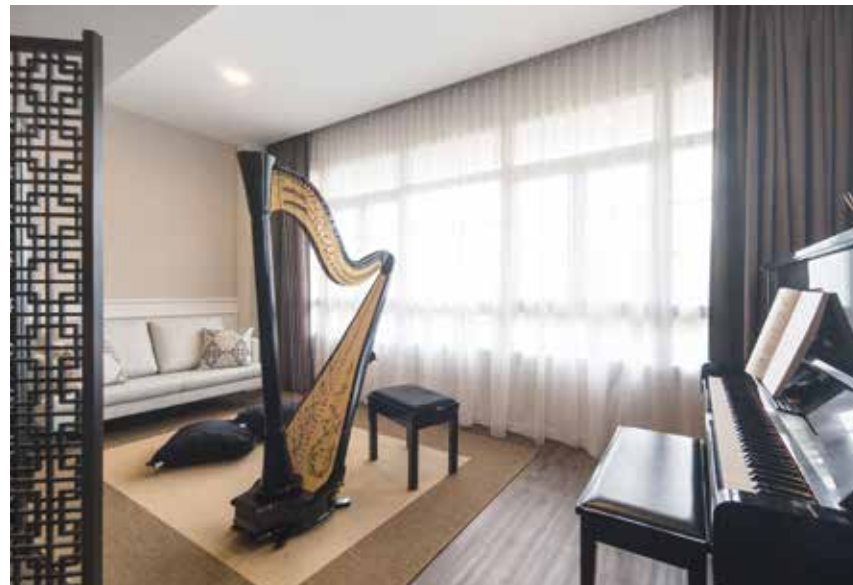
## Floor Area

2,100 sqft



## OPULENCE AHEAD

Colonial-era accents grace the cavernous communal room with flair. Manager Ashley Loh from D'Initial elaborates, "We expanded the living area by merging the balcony with the communal area." Combining these two spaces also enhanced the flow of natural light, from the balcony windows into the living room.



## NEW HEIGHTS

The balcony has a drop ceiling that's lower than the other rooms', so Ashley knew she had to naturally balance the height. The solution: Faux ceiling beams with a woodgrain finish. These rafters line the ceiling and help to mask the uneven height. It also lends to the aesthetic of a colonial-era home, and is further complemented by full-height cabinetry with classy, white panelling.

✔  
**CULINARY CHIC**

For the same light-enhancing touch, the kitchen's boundary wall was taken down and replaced with swing-out glass doors. The large cookspace also hosts a beautiful combination of quartz countertops, a tiled backsplash with natural stone patterns, grey laminate counters and cabinetry that sport mouldings similar to those in the communal areas. Floor tiles with woodgrain patterns are laid out in a diagonal layout to contrast the streamlined order of the kitchen cabinetry.

➤  
**ELEGANT FUNCTIONALITY**

The dining area retains the charming English vibe, but boasts more than just a focus on the aesthetics. Practicality and functionality play important roles in the design of the space too. The booth seat, for example, conceals the fuse box on one side and a shoe cabinet on the other. To complete the picture of poise and elegance, a matching laminate backs the nook behind the booth seat.



*“When you work with a dramatic style like the English colonial look, it’s important to balance everything out with lots of natural light and space.”*



◀  
**HIDDEN TREASURES**

The guest bedroom embodies the concept of flexible spaces with an integrated Murphy bed. When not in use, the bed can be tucked away neatly within the custom-built cabinetry. Navy blue wardrobe doors set the scene for a restful sleep, while brass lion-head knockers add that grand yet whimsical touch to the space.



**D' INITIAL CONCEPT**  
366A Tanjong Katong Road  
Singapore 437124  
Tel (65) 6348 8982  
Fax (65) 6610 2396  
pea@dinitialconcept.com  
www.dinitialconcept.com