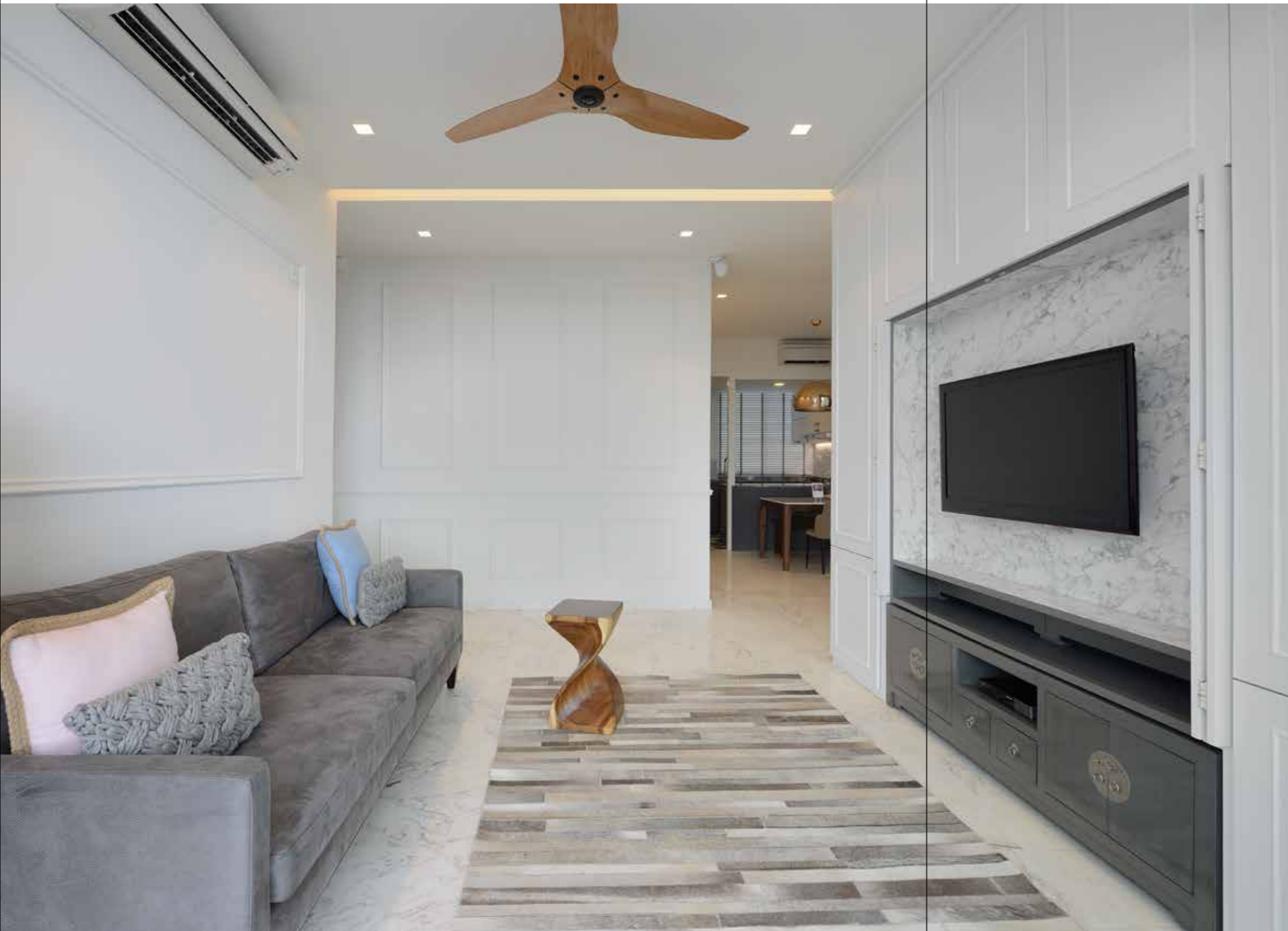


Project Type: 3-bedroom condominium | Floor Area: 1,110 sqft

# PRIVATE APARTMENT WITH CLASSIC GOOD LOOKS

For their new home in this resale condominium unit, the couple wanted a modern-looking interior with hints of the classic style. They also preferred closed storage units for a bright and clean feel. Their designers from D' Initial Concept used decorative doors and a mix of European-inspired finishings to achieve a design that fully meets their needs.

TEXT JASMINE GOH



## Modern classic

A light neutral colour palette is applied in the living room, with a full-height cabinet with classic mouldings creating an elegant and beautiful design. Maximising the space in the room, the custom-made storage unit is built to the ceiling and spans the entire wall, providing plenty of storage space for the couple.



#### Hidden TV

Bi-fold pocket doors can be used to conceal the television, allowing the owners to maintain an uncluttered atmosphere when needed. The designers also made provisions to accommodate the homeowners' existing TV console, which was brought over from their previous home. The finishing on the cabinets are repeated consistently throughout the entire house, even in the kitchen and on the walls, creating a clean and cohesive look in this home.



#### European inspiration

The wall separating the dining area from the kitchen was taken down to create this open-concept space, allowing for better interaction between the dining and cooking areas. In order to contain cooking fumes and smells within the kitchen during heavy cooking, the designers installed bi-fold accordion glass windows. When closed, this helps to separate the kitchen from the rest of the space while allowing the different spaces to still be visually connected.



#### Minimalist appeal

The same palette of white, grey, and tan tones seen in the living room is also applied in the dining room, allowing for a sense of continuity in the entire home. A pair of pendant lamps, in a polished golden hue, imbues the space with warmth and a hint of colour while cove lighting helps to brighten the space and lead the way into the apartment.



#### Distinct in colour

Clad in a decadent dark grey shade, the bottom kitchen cabinets offer a lovely colour contrast in this light-hued home. Shimmering white tiles used on the backsplash add an element of glamour to the space. For the floor, the designers chose ceramic arabesque tiles in greys and whites to complement the cabinets and backsplash, tying the entire space together.



#### THE BRIEF

A clean look was the priority for the homeowners of this resale apartment. With a preference for closed storage compartments over open shelves, they requested that most, if not all, built-in storage units to be closed up. Full-height closed cabinets were incorporated into the design but carefully balanced so that they do not overwhelm the space.

To create a bright and modern space, a light-hued colour palette was applied to lend a fresh and soothing atmosphere to the home. White walls, cream floors, and lovely grey tones encourage a sense of spaciousness.

Since the homeowners wanted elements of the classic style, their designer used arabesque tiles in the kitchen, and designed the cabinets and walls with European-style molding. This finishing adds an elegant touch while at the same time, helps to tie the different spaces together in one cohesive design.



#### D' Initial Concept

366A Tanjong Katong Road  
Singapore 437124  
T (65) 6348 8982  
F (65) 6610 2396

pea@dinitialconcept.com  
www.dinitialconcept.com