

Project Type
Four-bedroom condominium
Floor Area
2,260 sqft

Heritage and culture reign in this gallery-like condo

While proposing the style of this condominium unit, the designers from D' Initial Concept had to work with the homeowners' existing furniture. The married couple living here has also amassed a treasure trove of art pieces from their travels. To incorporate all these without cluttering the look, the designers deftly matched the elaborate details of the furnishings within a clean-cut modern landscape.

TEXT DISA TAN



HODGEPODGE HAVEN

East meets West in this carefully curated living area. Not only did Manager Ashley Loh from D' Initial Concept forge a balanced design scheme with the homeowners' existing furnishings, she also ensured that nothing looks out of place here. It helps that the space has a double volume ceiling and a pristine white colour scheme was applied to serve as neutral ground. This allows the furniture to take prominence without overwhelming the final look.



FAMILIAR GROUNDS

The homeowners run a business abroad so they travel quite extensively. This is why it's imperative for the living space to be as inviting as possible, so as to allow the owners to feel at home almost immediately upon stepping in. The existing furniture fills this new space with a welcoming and familiar presence.





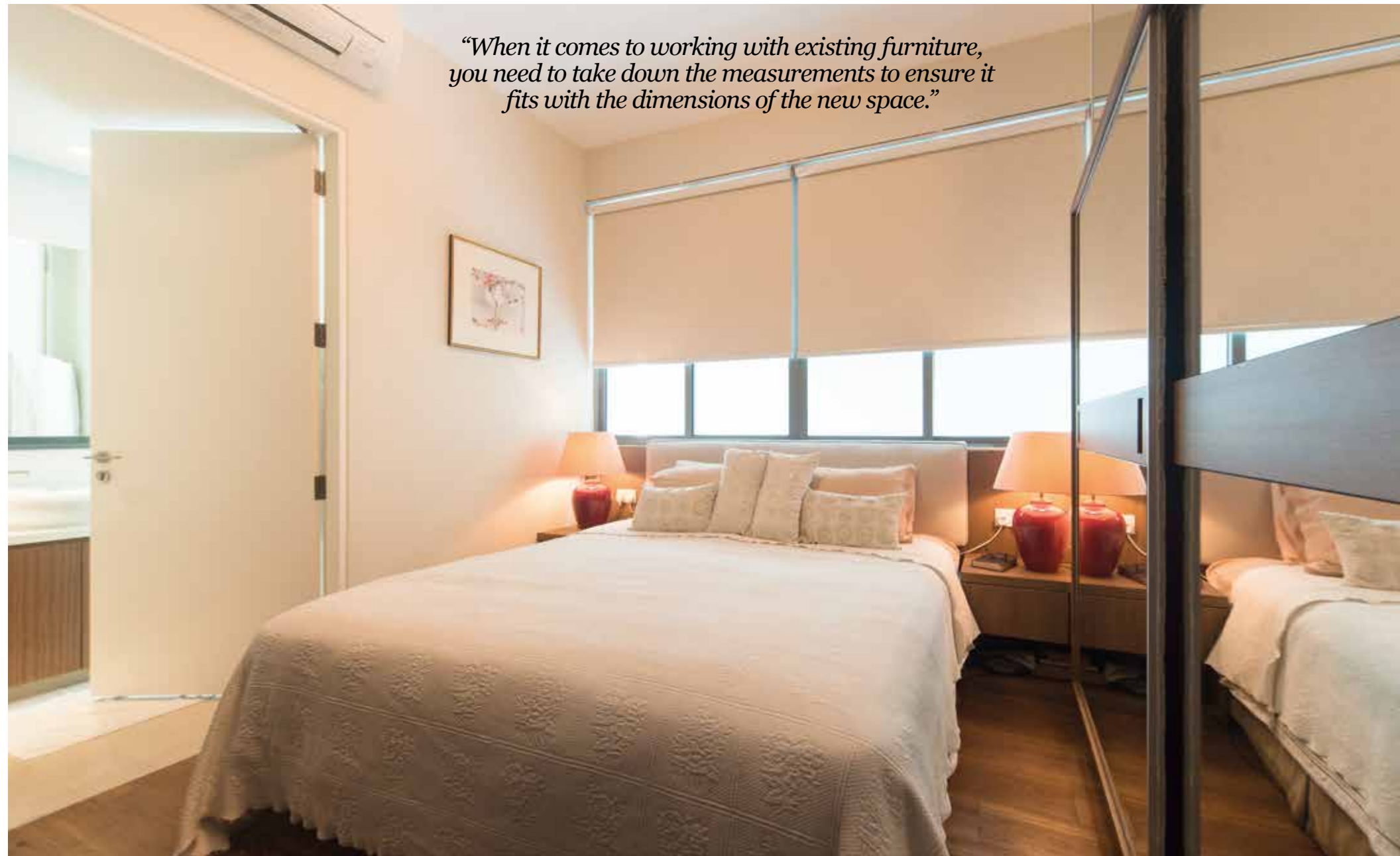
ROOMY ILLUSION

An entire wall is dedicated to the wardrobe. Sliding doors with a mirror finish now clad this storage area. Ashley reveals that it was previously swing-out doors but it had to be replaced due to space constraints. With the mirror finish and its seamless handle recesses, the wardrobe creates a larger visual expanse of space within the master bedroom.



ACCENT CORNER

In a home for art-lovers, it's important for the designers to dedicate space for the owners to display their collection of photographs. This corner of the corridor has been turned into a focal point, with pictures and paintings bringing visual interest to a small dresser.

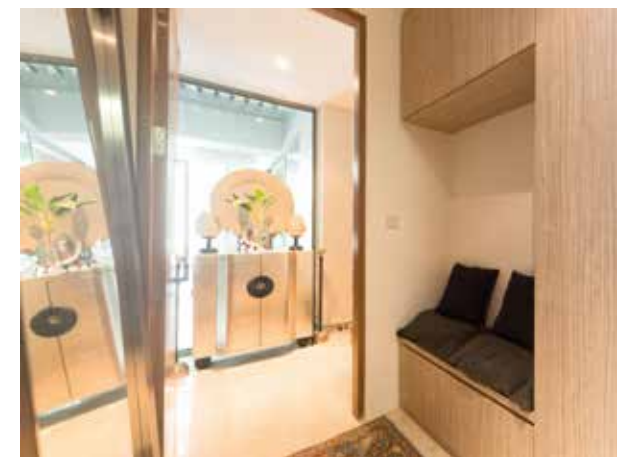


“When it comes to working with existing furniture, you need to take down the measurements to ensure it fits with the dimensions of the new space.”



MEMORY LANE

Walking down the corridor that leads to the bedrooms is designed to bring back nostalgic memories for the homeowners. A vignette of photo frames and decorative accents fills up a console and takes them back to wonderful moments shared with friends and family.



WELL SEATED

It is evident that Ashley gave extra thought to basic fixtures such as the shoe cabinet. By incorporating a cosy recess within the design of the custom-built shoe cabinet, the homeowners can utilise this as a seat to put on their footwear in comfort.



D' INITIAL CONCEPT
366A Tanjong Katong Road
Singapore 437124
Tel (65) 6348 8982
Fax (65) 6610 2396
pea@initialconcept.com
www.initialconcept.com