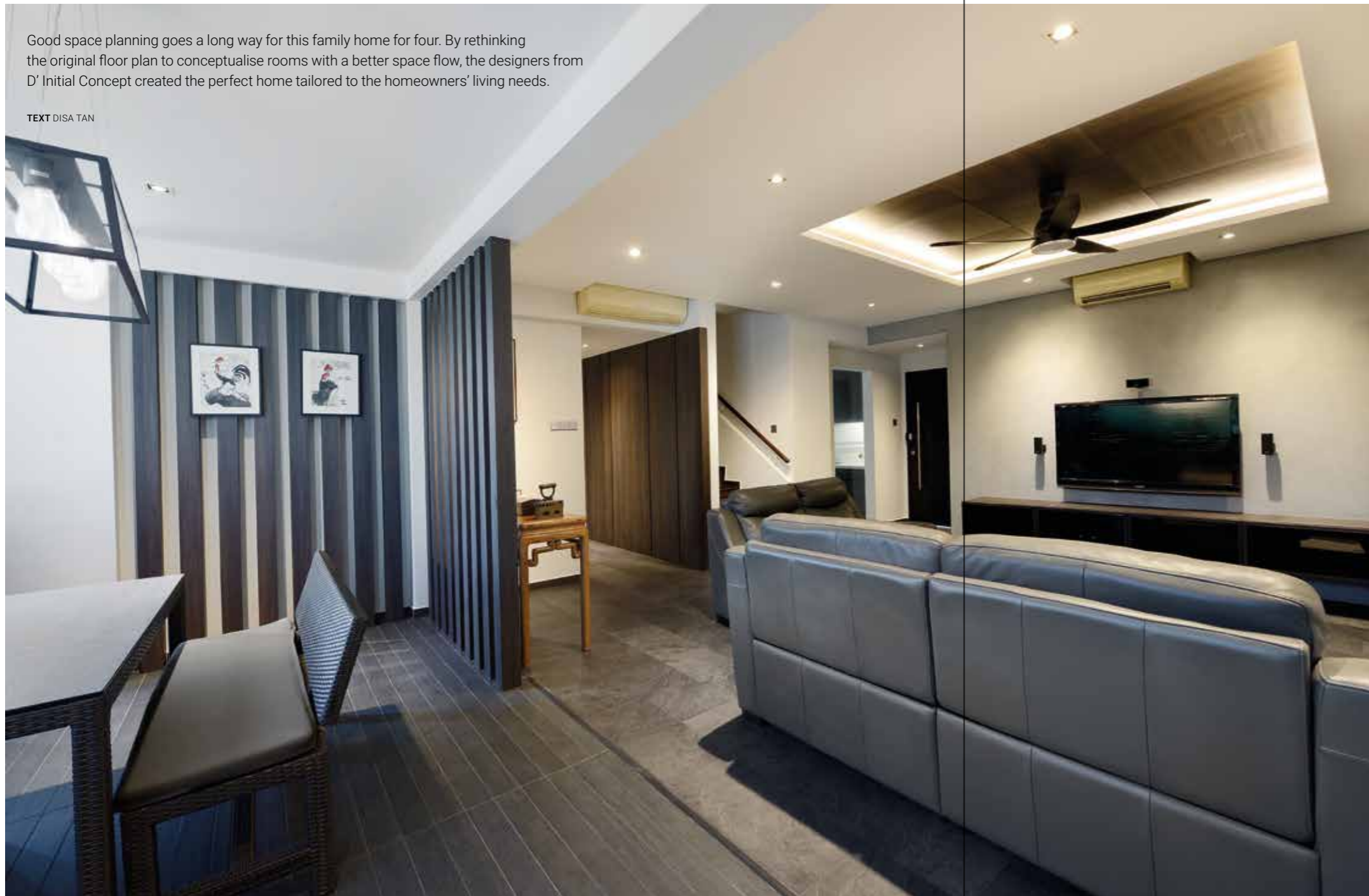


Project Type: Four-bedroom condominium penthouse | Floor Area: 2,551 sqft

A SPACE-SMART MODERN PENTHOUSE

Good space planning goes a long way for this family home for four. By rethinking the original floor plan to conceptualise rooms with a better space flow, the designers from D' Initial Concept created the perfect home tailored to the homeowners' living needs.

TEXT DISA TAN



◀ Making room

Having stayed here for the last five years, the homeowners and their two sons wanted a change of scene for their home. Most importantly, they wanted quality materials to replace the worn down carpentry works. Interior designers Edmund Ong and Jaslyn Hong acceded to this request with a major overhaul and also tweaked the original floor plan. The dining area was re-allocated to the balcony, allowing the dining and living zones to be separated by a comfortable distance.

▼ Easy appeal

To convey a timeless and modern style in the kitchen, Edmund and Jaslyn worked with a sophisticated palette of earthy, neutral tones. Quality and long-lasting surfaces and hardware such as quartz worktops and Blum fittings were also applied. "The homeowner is an engineer and was very pleased when we chose Blum fittings for the kitchen," says Edmund. "They wanted a home that would serve them well for a long time and this material selection definitely meets the criteria."



“Apart from a timeless modern style, quality materials make all the difference and ensure the longevity of this home.”



Woody retreat

For the master bedroom, Edmund and Jaslyn applied a similar colour palette of earthy neutrals on the headboard as well as the wall backing for the entertainment unit. To up the visual impact, they utilised a variation of woodgrain finishes and arranged them in different vertical and horizontal orientations for the headboard. These laminate coverings also sport two different tones to enhance the visual effect.



Grand expansion

The previous common bathroom at the lower level of the penthouse was much too cramped. To enlarge it, the designers combined it with a smaller bathroom and the storeroom. With more room to work with, the designers conceptualised a spa-like oasis clad in tiles with stone-like textures. Tiles with gorgeous veining are used in the shower stall to create a beautiful feature wall.



Hidden agenda

One of the alterations made to the floor plan includes this corridor. It was shortened to create more floor space for the common bedroom, allowing it to have a more comfortable layout. The designers also clad the corridor wall using laminates with a dark woodgrain finish. Not only does this create a sense of design uniformity with the overall style, it also conceals the entrance to the bomb shelter.

THE BRIEF

The previous carpentry works were of inferior quality and the home encountered a termite infestation. These were reasons enough for the homeowners to execute a major makeover for their five-year-old penthouse unit.

Having encountered all these setbacks with their current home, materials of quality and durability were on the top of the homeowners' list. It also resonates with their wish to settle down in this home for the long term.

Besides replacing all the old, worn-out surfaces with new and resilient materials, the designers also took the opportunity to improve the home's configuration which sits well with the lifestyles of the homeowners and their two sons.



D' Initial Concept

366A Tanjong Katong Road
Singapore 437124
T (65) 6348 8982
F (65) 6610 2396

pea@dinitialconcept.com
www.dinitialconcept.com